

The probes DA301 and HT400 from FLEXIM are designed for pipe wall thickness measurement. They can be connected to the portable ultrasonic flowmeter FLUXUS ADM 6725 instead of the flow transducers. Upon connection, the built-in electronic module will automatically recognize the probe and activate the wall thickness measuring mode.

To measure the wall thickness, you only have to apply coupling compound on the pipe and firmly press the probe against the pipe. The measured wall thickness can be added to the parameter set of the pipe by simply confirming the corresponding query.

### Features

- integrated transducer data
- automatic switching of the measuring mode
- protection against polarity reversion

### Technical Data

#### Wall Thickness Probes

| Type               | DA301   |
|--------------------|---|
| Temperature range: | (-20 to 60)°C                                   |
| Measuring range*:  | (1.0 to 200)mm                                  |
| Resolution:        | 0.01 mm   |
| Linearity:         | 0.1 mm  |
| Cable length:      | 1.5 m   |
| Type               | HT400   |
| Temperature range: | (0 to 200)°C<br>(for short periods up to 540°C) |
| Measuring range*:  | (1.0 to 200)mm                                  |
| Resolution:        | 0.01 mm   |
| Linearity:         | 0.1 mm  |
| Cable length:      | 1.2 m   |

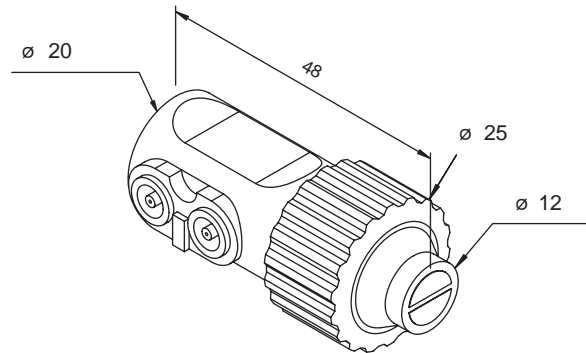
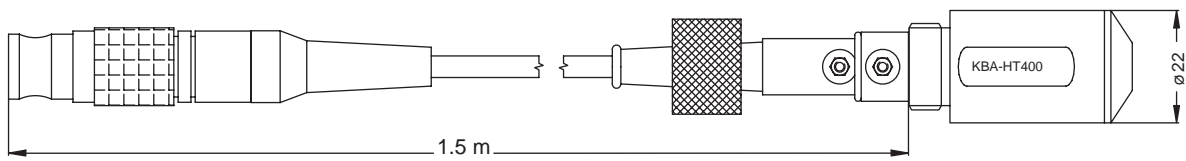
\*The practically possible measuring range strongly depends on the attenuation of the ultrasonic signal in the material. For strongly attenuating plastics as PFA, PTFE and PP, the actual measuring range will be smaller.



Wall thickness probes

## Dimensions

### Probe DA301



### Probe HT400

